



IN-HOME NETWORKS

enlighten TEN-FW06 FTTH WALL OUTLET

This FTTH Wall Outlet is designed to accommodate the termination of installation cables to pigtails and provides an interface between the network and the customer device, it is specifically designed for Din Rail mounting and is particularly suitable for installation in service and riser cupboards of buildings.

Features

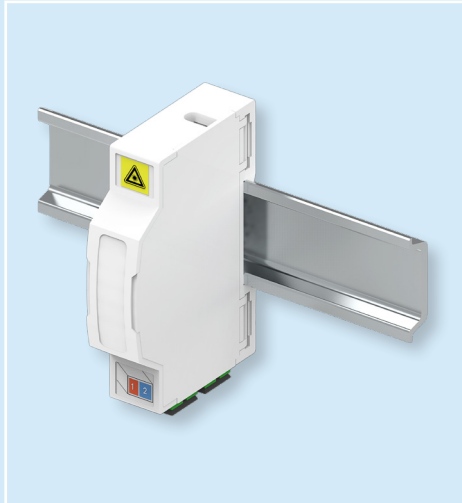
- Fits alongside other similar devices that use standard DIN rail mounting solutions.
- Hinged protective lid, providing easy access to the panel.
- Extremely compact and clever design that provides swift and easy installation.
- Accommodates two optical adapters and comes with colour coded optical access ports.
- Delivered empty or with adaptor(s) and/or with pigtail(s) in a suitable box.



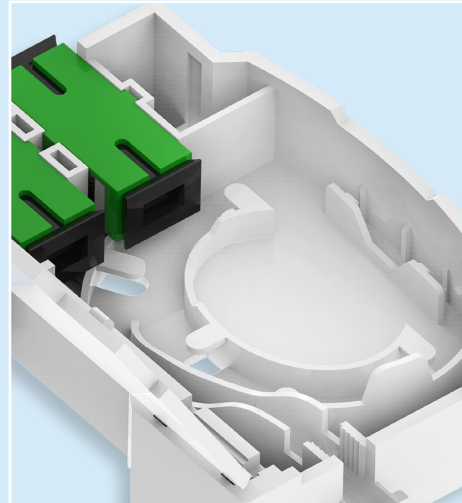
enlighten OPTICAL PASSIVES / FTTH OUTLET SERIES

GENERAL			
Dimension (LxWxH)	85 x 60.5 x 18 mm	IP Rating	20
Material	Thermoplastic	Supported adaptors	SC, LC
Material Flammability Rating	HB (UL94)	Weight	35 g
Operating temperature	-40 - +85 °C	Colour	White (RAL9010)

IMAGE GALLERY

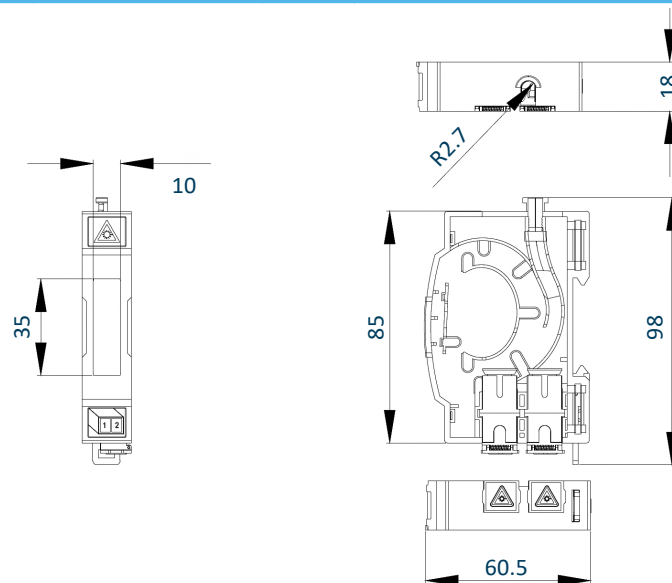


TEN-FW06 supports both wall and DIN rail mounting



TEN-FW06 offers efficient fibre splicing capabilities

MECHANICAL LAYOUT



ORDERING INFORMATION

P/N	DESCRIPTION
TEN-FW06-0	FTTH Wall Outlet 6 DIN rail without Adapters or Pigtaills
TEN-FW06-1SCA0	FTTH Wall Outlet 6 DIN rail with 1 piece SC/APC Adapter and no Pigtaills
TEN-FW06-2SCA0	FTTH Wall Outlet 6 DIN rail with 2 pieces SC/APC Adapter and no Pigtaills



TELESTE CORPORATION

www.teleste.com

Enlighten FTTH Outlet Series TEN-FW06_250303

Copyright © 2025 Teleste Corporation. All rights reserved. Teleste and the Teleste logo are registered trademarks of Teleste Corporation. Other product and service marks are property of their respective owners.

Teleste reserves the right to make changes to any features and specifications of the products without prior notice. Although the information in this document has been reproduced in good faith, the contents of this document are provided "as is". Teleste makes no warranties of any kind in relation to the accuracy, reliability or contents of this document, except as required by applicable law.