



TEN-FWB2 - DISTRIBUTION ENCLOSURE

Installation Guide

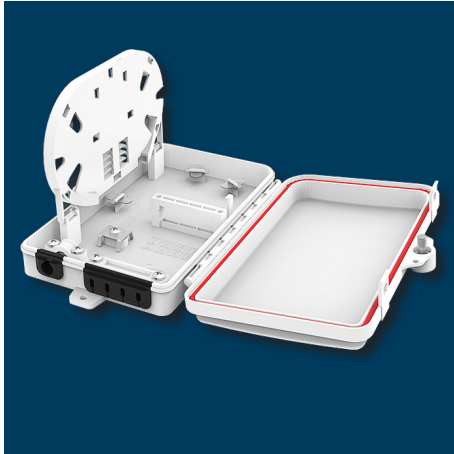
Rev. 1.10/10.2024

TELESTE

Contents

Getting Started.....	1
Introduction	1
Package Contents.....	1
About the TEN-FWB2 Distribution Enclosure	2
Product Specification - General	2
Mechanical Layout	2
Installation Instructions	3
General Preparations and Precautions	3
Preparation of the Incoming Optical Cable.....	3
Installation Guidelines	3
Mounting Guidance	8
Legal Declarations	10

Getting Started



TEN-FWB2 - Distribution Enclosure

Introduction

The TEN-FWB2 is designed for outdoor mounting, this durable enclosure enables easy connections between feeder and subscriber cables. It features a dedicated splice tray for effortless splice connections and a lockable lid to prevent unauthorized access. Constructed from high-quality plastics, the wall box ensures long-lasting performance. The multifunctional tray also supports the integration of a mini-splitter, offering enhanced flexibility.

Package Contents

Kindly unpack the TEN-FWB2 and confirm that all items are present, as illustrated in Figure 1. Should any items be missing, please promptly contact your local seller for assistance.



Figure 1 - Package contents

- TEN-FWB2 enclosure
- Lock key
- Transport tube
- Splice protectors
- Fixing wall screws
- Wall fixings

About the TEN-FWB2 Distribution Enclosure

The TEN-FWB2 is engineered for extreme conditions, this rugged enclosure operates flawlessly in temperatures ranging from -40°C to +80°C, ensuring reliable performance in the harshest environments. Supporting input cables up to 10.0 mm and output cables up to 3.0 mm, it offers versatile cable management solutions. With an IP65 protection rating for complete defense against dust and water, and the flexibility to be wall-mounted or pole-mounted, this box is designed for durability and adaptability in any setting.

Product Specification - General

Max. Input Cable Diameter	10.0 mm	Max. Output Cable Diameter	3.0 mm
Dimension (LxWxH)	205.50 × 119.50 × 37.95 mm	IP rating	IP65
Material	PC + ABS	Supported adaptors	SC simplex, LC Duplex
Operating Temperature	-40 - +80 °C	Colour	White (RAL9010)
Weight	0.306 kg	Type of Installation	Wall-mount and Pole-mount

Mechanical Layout

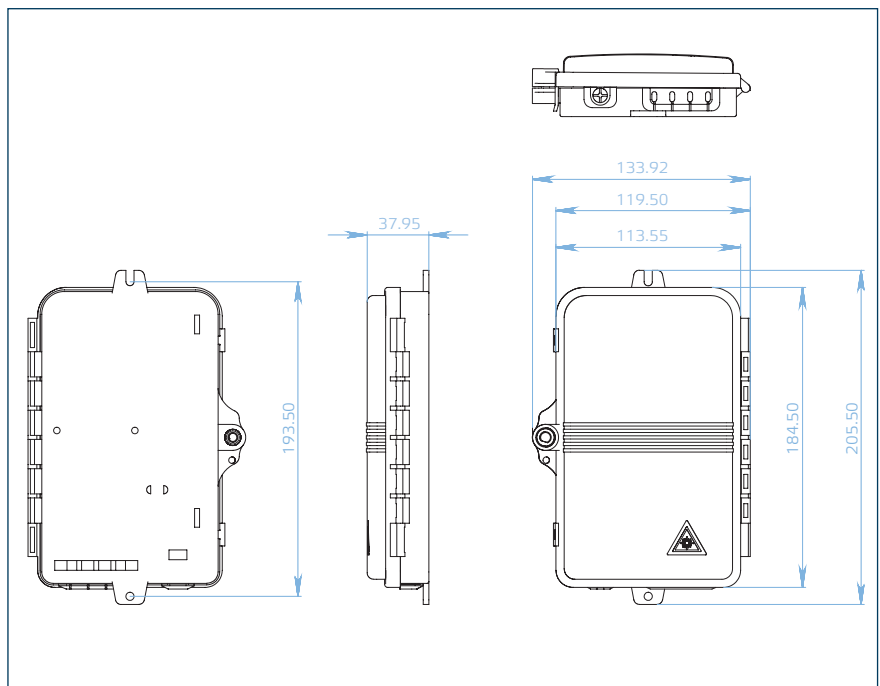


Figure 2 - Mechanical layout

Installation Instructions



Warning! Ensure to follow basic safety precautions to reduce risk of fire, electrical shock, and personal injury.

Thank you for choosing this Teleste product. Please take a moment and carefully read these instructions through before installing the product.

General Preparations and Precautions

1. Check the Distribution Enclosure, cable items and all other components for any damages before installation.
2. Make sure to keep all components dry and clean for the installation.
3. Keep the working environment clean (dry and no dust) and flat for the installation.
4. It's essential to use standard instruments and tools during installation. This practice minimizes the risk of damage and guarantees long-term system performance.

Preparation of the Incoming Optical Cable

1. Determine the length to cut (approximately 100 cm) and the required stripping length.
2. Cut the reinforced core, leaving approximately 4 cm of the reserved length.

Installation Guidelines

1. To begin, remove the adapter plate, install the adapters, and then secure the adapter plate. Please refer to pictures 1 and 2 for further clarification.



Picture 1

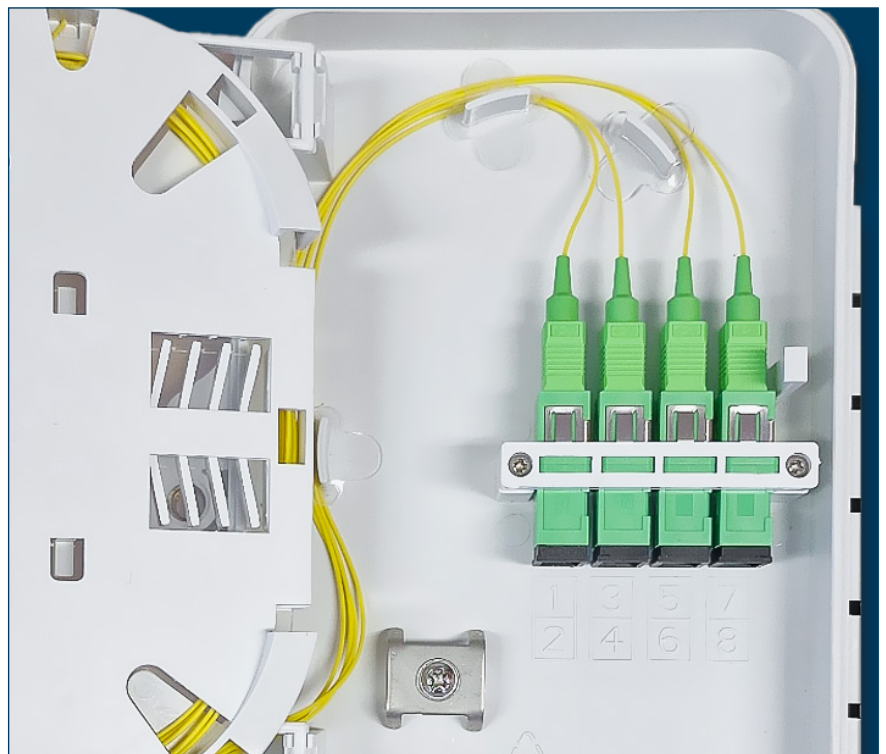


All necessary safety instructions must be followed during the installation and maintenance operations. The safety requirements for class 1M lasers are detailed in EN60825-1.



Picture 2

2. Insert the pigtails into the adapters and route them onto the splice tray as shown in Picture 3.

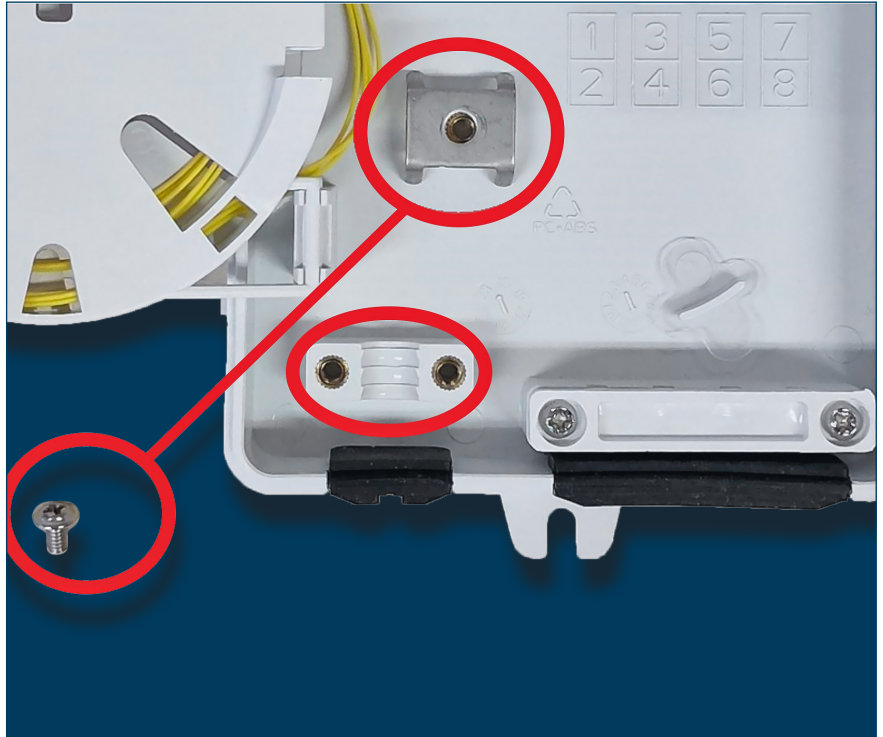


Picture 3



Warning! Never look directly into the end of a fibre or a fibre connector that may be carrying laser light. Laser light, visible or invisible, can seriously injure eyes or even cause blindness.

3. Loosen the screw for the secure clamp and temporarily remove the cable clamp used to secure the incoming cable.

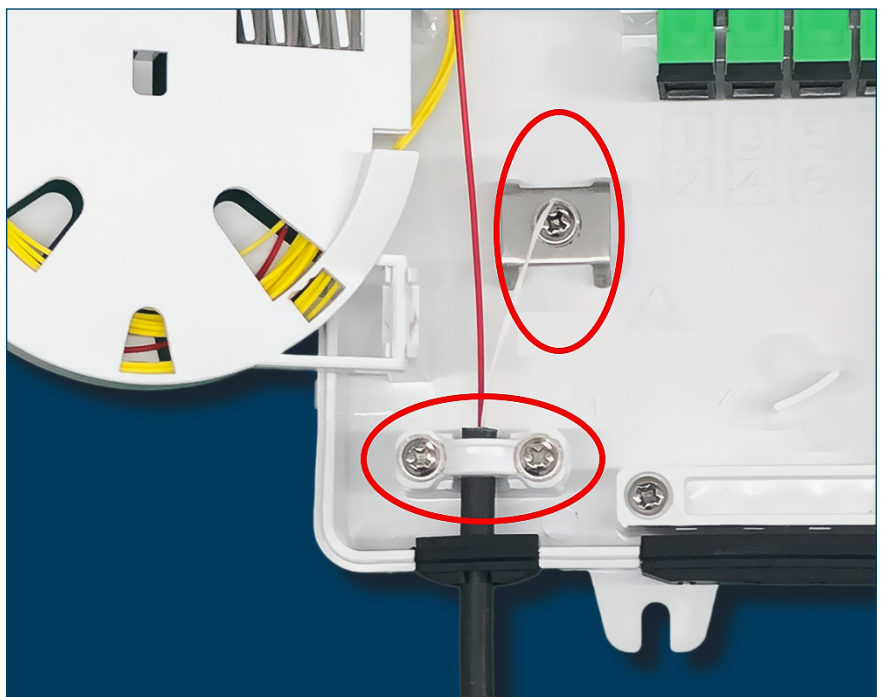


Picture 4

4. Thread the stripped cable into the enclosure. Ensure the fibre cable is properly positioned and sealed within the rubber gasket. Tighten the cable with the fixing clamp, then secure the cable's strength member to the bracket using the screw, as shown in picture 5.

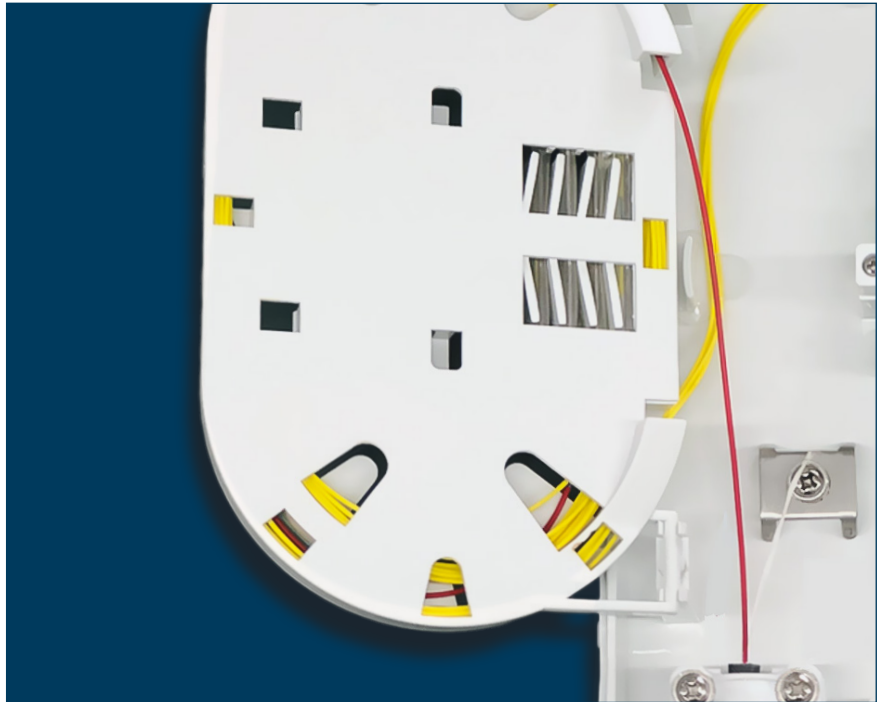


Note! Optical fibres should not be damaged. Cut the damaged fibre, and re-strip the fibre if any damage occurs.



Picture 5

- Next, route the incoming optical fibre tube onto the splice tray. Carefully thread it through the designated slot, ensuring it is properly positioned. Avoid sharp bends or excessive tension that could damage the fibre. Refer to picture 6.



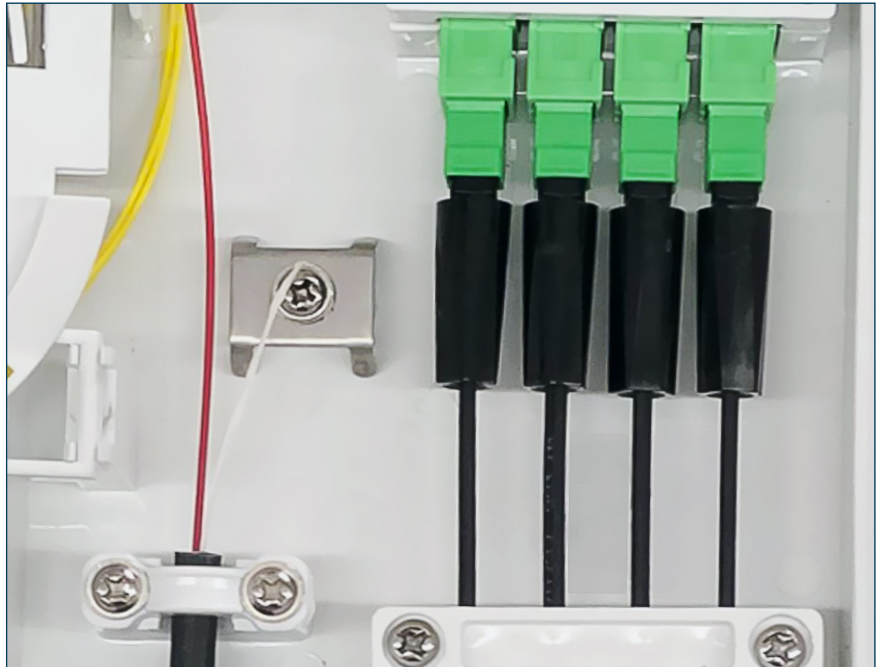
Picture 6

- Splice the fibres and insert each splice into the splice holders separately. If needed, reorganize and coil any excess cabling carefully around the radius limiter.



Picture 7

7. Thread the drop cables through the inlet ports, install the fast connectors, and connect them to the adapters.



Picture 8

8. When the diameter of a fibre cable is smaller than that of an inlet/outlet port, use sealing tape to increase the external diameter of the fibre cable. Ensure that all ports are blocked with rubber plugs, and that all screws are tightened. Ensure the enclosure is securely locked to prevent unauthorized access and maintain the integrity of the optical connections.



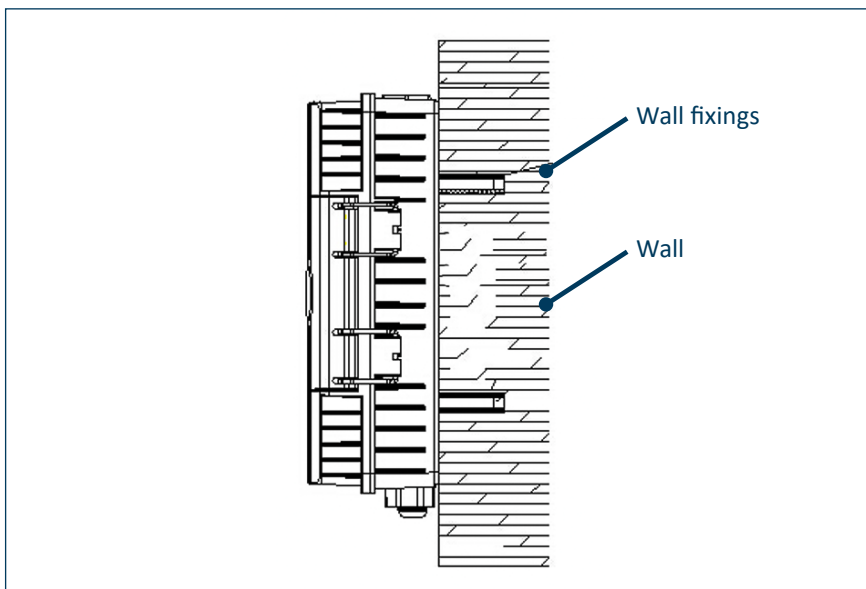
Picture 9

Mounting Guidance

To successfully complete the mounting of the product, follow the guidance steps outlined below. Ensure you have all necessary tools and materials on hand before beginning the process.

Wall mounting:

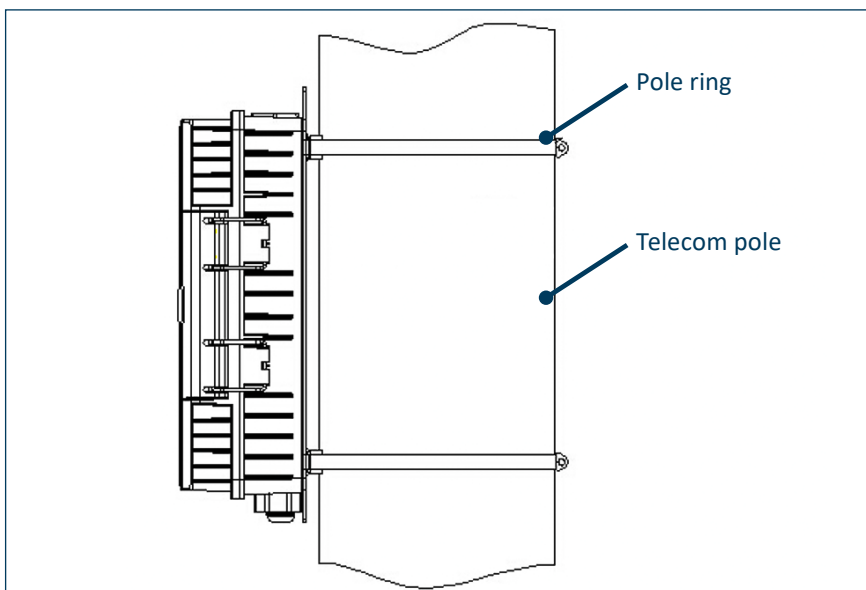
1. Drill holes in the wall at the designated locations. Insert the wall fixing plugs into these holes. Position the box so that it aligns perfectly with the drilled holes.
2. Once aligned, secure the box in place by inserting and tightening the self-tapping screws.



Picture 11

Pole mounting:

1. Fit the enclosure with designated pole rings, fastened tightly around the pole to ensure stability and secure attachment.



Picture 12

Legal Declarations

Copyright © 2024 Teleste Corporation. All rights reserved.

TELESTE is a registered trademark of Teleste Corporation. Other product and service marks are property of their respective owners.

This document is protected by copyright laws. Unauthorized distribution or reproduction of this document is strictly prohibited.

Teleste reserves the right to make changes to any of the products described in this document without notice and all specifications are subject to change without notice. Current product specifications are stated in the latest versions of detailed product specifications.

To the maximum extent permitted by applicable law, under no circumstances shall Teleste be responsible for any loss of data or income or any special, incidental, consequential or indirect damages howsoever caused.

The contents of this document are provided “as is”. Except as required by applicable law, no warranties of any kind, either express or implied, including, but not limited to, the implied warranties of merchantability and fitness for a particular purpose, are made in relation to the accuracy, reliability or contents of this document.

Teleste reserves the right to revise this document or withdraw it at any time without notice.



TELESTE

TELESTE CORPORATION

P.O.Box 323

FI-20101 Turku, Finland

www.teleste.com

Copyright © 2024 Teleste Corporation. All rights reserved. Teleste and the Teleste logo are registered trademarks of Teleste Corporation. Other product and service marks are property of their respective owners.

Teleste reserves the right to make changes to any features and specifications of the products without prior notice. Although the information in this document has been reproduced in good faith, the contents of this document are provided "as is". Teleste makes no warranties of any kind in relation to the accuracy, reliability or contents of this document, except as required by applicable law.