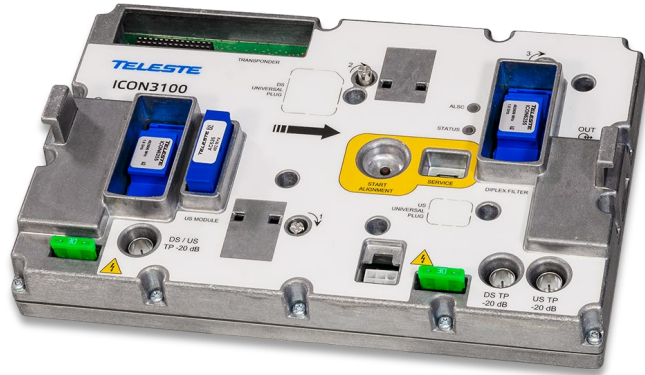


Intelligent Networks



Enablers of Intelligence



Service/device health monitoring

- Upstream ingress detection
- Downstream signal monitoring
- HW diagnostics

Electrical controls

- Embedded plug-ins
- Holistic electrical adjustability

Local and remote access

- IP connectivity
- Wireless service terminal connection (laptop, tablet or smartphone)

Local Intelligence



Zero-touch installation

Auto-alignment
Pre-installed & embedded plug-ins

Automated actions

Intelligent power saving
Ingress suppression
ALSC
RFF

Telemetry information

Device id and location information
Device health information
Measurement data
Warnings and alarms

Remote Intelligence

Remote actions and diagnostics

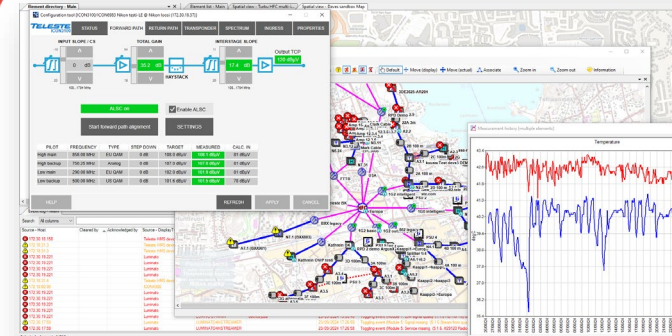
- Optimization of RF parameters
- Noise mitigation
- Intelligent power saving
- SW upgrades
- Reactive and proactive troubleshooting

Inventory management

- Device detail gathering
- HW & SW versions
- Location information
- Network topology information

API integrations

- Addition of new applications, enhancing information flow
- Allows operators to incorporate ML & AI



Smart Solutions +15 Years With +800.000 Shipped



100%
less seasonal
maintenance visits



60%
fewer
truck rolls



30%
less tickets and
calls to help desk



100%
inventory
accuracy



20%
reduction in power
consumption

Sources:

Evaluating Cable Network Inventory Methods: Long-Term Scenarios (SCTE 2024)

Tackling Upstream Ingress and CPD Issues in High-Split Cable Networks: Challenges and Solutions (SCTE 2023)

Extended Upstream: A Pragmatic Approach (SCTE 2021)

Intelligent Tools to Increase Uptime in The HFC Plant (Teleste 2017)