

enlighten
FTTx
CUSTOMER DROP
SOLUTIONS



SDU ACCESS

FTTx

Customer Drop Solutions

Offering and capabilities overview

Teleste have a full range of product solutions to suit all types of customer drop Installations. Encompassing underground customer distribution enclosures which remove the need for above ground street cabinets, compact aerial enclosures and customer premise entry solutions. Our IP68 solutions can be mounted on premise walls, buried directly underground or placed in our own small handholes. have a full range of product solutions to suit all types of SDU installations. Encompassing basement distribution enclosures and protective metal lock boxes to install them in for extra protection as needed, along with vertical and horizontal distribution enclosures.



TELESTE

CONNECTIVITY EXCELLENCE EFFICIENT CUSTOMER DROP SOLUTIONS

Teleste has a wide range of flexible and efficient customer drop solutions for underground and aerial applications, making SDU installations and customer connections easy and quick to achieve. Our solutions are designed with durability and reliability in mind, ensuring long-lasting performance and minimal maintenance for both residential and commercial installations.

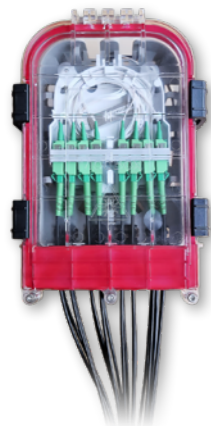
Engineering Excellence Focused on Customer Satisfaction: Your Trusted Partner in Innovation

- Experts in bespoke solutions tailored to each customer's unique specifications and preferences
- Customised and standard solutions to cover all application areas of FTTx network build
- High-level engineering expertise
- We work in long-term and close co-operation with our customers



Unique compact IP68 48 customer drop solution for pulled and blown fibre drops **replacing need** for above ground street cabinets.

[READ MORE →](#)



Compact IP68 8/16 customer drop enclosure supporting SC and Dual LC connectors along with **splitters and splicing** support.

[READ MORE →](#)



UNDERGROUND CUSTOMER DROP SOLUTIONS

AERIAL CUSTOMER DROP SOLUTIONS



Ultra compact 32 way aerial connection node **saving 25-30%** of pole mounting space to traditional solutions.

[READ MORE →](#)



Flexible aerial connection nodes with **separate lockable network area** and **unique drop cable entry** systems.

[READ MORE →](#)

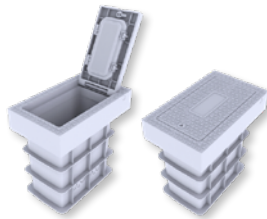


SDU ENTRY SOLUTIONS



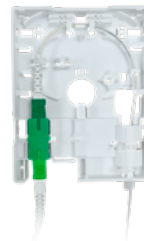
Very compact IP68 enclosures for multiple customer drops with convenient **pass-through** and **splicing** support.

[READ MORE →](#)



Small, rugged underground chambers equipped with multiple ports, supporting **enclosure installation points** and **spare cable management**.

[READ MORE →](#)



Compact enclosures supporting **gas blocks** on entry and efficient fibre management systems.

[READ MORE →](#)



Building entry enclosures supporting **multiple cable entry points**, gas blocks, adapters and splicing capability.

[READ MORE →](#)

TELESTE

TELESTE CORPORATION
www.teleste.com

Enlighten FTTx Drop Solutions_240909

Copyright © 2024 Teleste Corporation. All rights reserved. Teleste and the Teleste logo are registered trademarks of Teleste Corporation. Other product and service marks are property of their respective owners.

Teleste reserves the right to make changes to any features and specifications of the products without prior notice. Although the information in this document has been reproduced in good faith, the contents of this document are provided "as is". Teleste makes no warranties of any kind in relation to the accuracy, reliability or contents of this document, except as required by applicable law.